



# WELCOME REMARKS

DR. ARTURO BAYOCOT, REGIONAL DIRECTOR

**THIS IS OUR MANDATE**  
WE'RE DOING L+D FOR EFFICIENCY + PRODUCT DELIVERY



Doing our best is very **IMPORTANT** and **BEST** HAS HELPED so much in our **JOURNEY**



**OUR PROGRAMS MUST BE NEEDS DRIVEN**  
ONLY WHEN WE DO LDNA WILL WE BE ABLE TO CAPTURE THE PECULIAR NEEDS OF EACH REGION + ACTUAL NEEDS OF OUR CLIENTS



there are so many stories to tell AND THIS CULMINATING ACTIVITY IS AN **OPPORTUNITY TO HIGHLIGHT OUR VICTORIES**



# L+D SYSTEM FRAMEWORK SUBSYSTEMS KEY PROCESSES

## KEY TAKEAWAYS

THERE IS STILL A LOT WE need to learn as we **IMPLEMENT** THE DIFF L+D SUBSYSTEMS

**L+D IMPACTS** OTHER PROGRAMS + SYSTEMS

## L+D SUBSYSTEMS



**EXPERIENCE** HELPS US MASTER THE subsystems

**JOB EMBEDDED learning** MAKES THEM PART OF OUR DNA

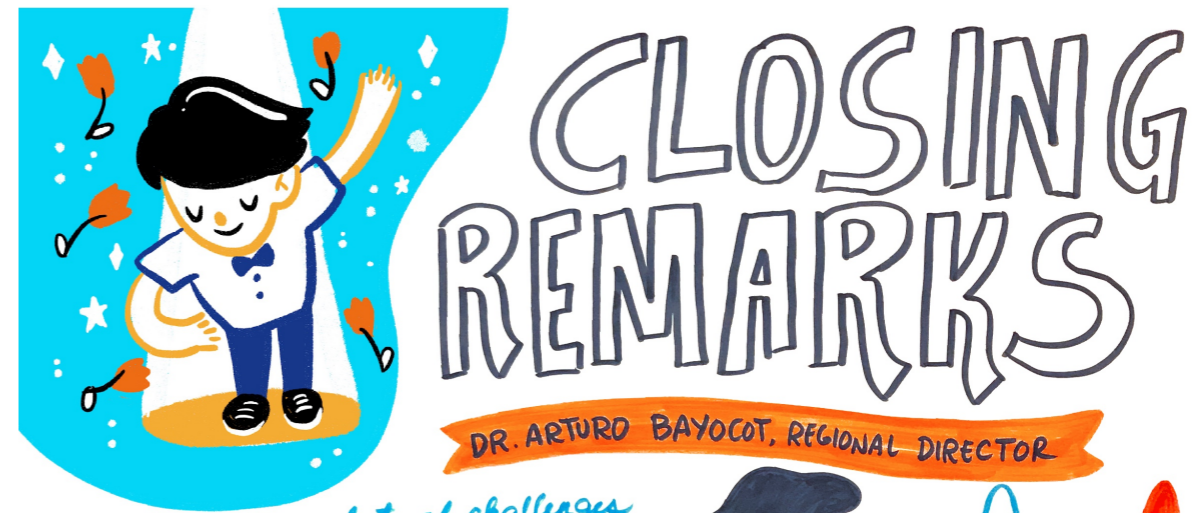


**INTEGRATION + HARMONIZATION OF L+D EFFORTS**

**STRENGTHEN x STANDARDIZE SYSTEMS + PROCESSES**

**INDIVIDUAL x TEAM COMMITMENT**

to ensure L+D's **FULL IMPLEMENTATION**



CLIENT: Basic Education Sector Transformation

IN A DATA DRIVEN SOCIETY, IT PAYS TO STEP BACK AND LISTEN TO THE CUSTOMER

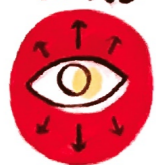
SEARCH IS AT THE CORE OF THE CUSTOMER JOURNEY

THE EMPOWERED CUSTOMER

MORE DETERMINED

MORE CURIOUS

MORE IMPATIENT



BE RELEVANT

BE THERE

BE SEAMLESS

MURAL BY PUSHPIN VISUALS

# #GENCX

THE ULTIMATE RETAIL DISRUPTOR



2ND PH RETAIL SUMMIT

== CX LOVES ==  
FINDING BETTER  
ways to consume



MULTI TOUCHPOINT  
MULTIPLATFORM

Live hand-painted mural for 2nd Philippine Retail Summit



CLIENT: Mundi Pharmacy Philippines



WELCOME  
address  
REPRESENTING MAYOR MAURICIO DOMOGAN

the CITY OF BAGUIO is YOURS. WE'RE HERE for you 24/7

Welcome to the city of pines  
and MAY YOU HAVE A CONFERENCE  
FILLED with IDEAS for the GOOD  
of our country

FEEL BAGUIO, EXPERIENCE BAGUIO



A YOUTH JOURNEY  
towards  
SOCIAL ADVOCACY

there is no doubt that our  
LIFE AS A NATION  
IS A CLEAR CASE  
of  
RESILIENCE



be inspired!  
DREAM BIG  
and  
ACT BIG!

our  
OBJECTIVE HERE  
is to  
INSTILL IN YOU  
RIZAL'S  
VALUES  
and  
IDEALS

let's  
LIVE  
the way  
RIZAL  
LIVED,  
in  
words &  
in  
deeds.



CLIENT: National Rizal Youth Leadership Camp



# ENDURE, WORK, inspire

It is the high hopes of the  
**KNIGHTS OF RIZAL** TO REKINDLE  
THE LIGHT OF NATIONALISM IN OUR HEARTS

in our humility  
WE BENEFIT NOT ONLY OURSELVES  
BUT THE NATION AS WELL

IN EVERYTHING WE DO,  
WE MUST ENDURE...  
PAUSE IF WE MUST  
but  
WE MUST NEVER  
QUIT



# DEFENDING SOVEREIGNTY in the WEST PH SEAS

we are facing a  
HISTORICAL NARRATIVE THAT IS FALSE  
but is  
BELIEVED by an ENTIRE NATION

all nations have a  
PARAMOUNT INTEREST IN UPHOLDING  
the LAWS of the SEA

we have  
TO PREPARE for the DAY  
WHEN CHINA COMES  
for our  
SEAS



# BUILDING NAT'L EVAL CAPACITIES IN Asia Pacific



## INTEGRATING 2030 AGENDA building blocks

### ALIGN STRATEGIES & PLANS with 2030 AGENDA

- HORIZONTAL/VERTICAL COORDINATION & POLICY COHERENCE

### INTEGRATING 2030 AGENDA into BUDGETS

- IDENTIFY SDG 'ACCELERATOR INTERVENTIONS'
- FINANCING FOR SUSTAINABLE DEVELOPMENT

## 'READINESS'

FOR EVALUATING PROGRESS TOWARDS SDGs

1. WHAT M+E SYSTEMS ARE IN PLACE?
2. HOW DO EVALS INFORM ADJUSTMENTS TO STRATEGIES, RESOURCE ALLOCATION, and POLICIES?
3. WHAT METHODS/TOOLS ARE USED TO SUPPORT INTEGRATED APPROACHES?
4. WHAT EQUITY-BASED EVAL METHODS ARE USED?

## RECOMMENDATIONS

PROMOTE EVALUATIVE THINKING & A LEARNING CULTURE



STRENGTHEN ALIGNMENT OF PRINCIPLES and ASPIRATIONS



IMPROVE HARMONIZATION & COORDINATION



DEVELOP & IMPLEMENT SPECIFIC HUMAN RESOURCE DEV'T and TRAINING STRATEGIES

STRENGTHEN FEEDBACK LOOPS



## open forum

"WHAT ARE THE KEY PROCESSES IN TERMS OF BUILDING EVALUATIVE THINKING?"

"IS THERE A TOOLKIT FOR EVALUATING GOALS?"

"HOW DO WE MOVE THIS FORWARD?"

"WHAT IMPT. INDICATORS SHOULD WE BE COLLECTING and TRACKING?"

"IS THERE A RECOMMENDED DESIGN FOR NATIONAL EVALUATION FRAMEWORK?"



# DATA SYSTEMS FOR M+E

## SURVEY FINDINGS

LED TO THE NEED TO...

ESTABLISH and OPERATIONALIZE an IT-BASED SYSTEM



REVISE MONITORING POLICY TO INCLUDE STRONG FOCUS ON PROGRAM OWNERSHIP



STRENGTHEN IMPLEMENTING PARTNER'S MONITORING



## UNFP STRATEGIC INFO. SYSTEM

- PLATFORM FOR PLANNING, MONITORING, and REPORTING
- OUTPUT-CENTERED SYSTEM
- FACILITATES MONITORING FOR RESULTS
- DASHBOARDS SHOW SNAPSHOT OF THE HEALTH OF A BUSINESS OR COUNTRY UNIT



## RIGHT-FIT EVIDENCE

## EVALUATION measures IMPACT

BUT BAD IMPACT MEASUREMENT IS WORSE THAN NONE AT ALL

WASTES MONEY

BAD DECISIONS



IF YOUR PROGRAM CAN'T BE EVALUATED YET, CONSIDER MONITORING DATA

GET FEEDBACK FROM YOUR CONSTITUENTS



ADOPT TECHNOLOGIES



ASSESS COST



## CART PRINCIPLES FOR M+E

CREDIBLE

RESPONSIBLE

ACTIONABLE

TRANSPORTABLE



# DEEP DIVES INTO NAT'L EVAL GUIDELINES

## EVAL ROLES and RESPONSIBILITIES



### IMPLEMENTING AGENCIES

- FORMULATE and PERIODICALLY UPDATE A SIX-YEAR ROLLING EVALUATION AGENDA
- ESTABLISH AN EVAL UNIT in line with DBM ORG & STAFFING POLICIES
- ALLOCATE ADEQUATE RESOURCES for EVAL



### AGENCY EVAL UNIT ROLES:



### competencies NEEDED



### STRUCTURE

- NEED FOR OVERSIGHT COMMITTEE
- EVAL MUST BE SEPARATE FROM MONITORING + PLANNING
- EXEC. BOARD MUST APPROVE BUDGET

### RECOMMENDATION:

1. CREATE M+E PLANTILLA POSITIONS
2. AUTOMATIC % APPROPRIATION FOR M+E ACTIVITIES
3. PROVIDE BUDGET ALLOCATION FOR M+E IN THE GAA
4. CLARIFY GUIDELINES and SCOPE OF EVALUATION



# INTEGRATING EVALUATION in Government INSTITUTIONS & POLICIES



### DEV'T PLANNING + INVESTMENT PROGRAMMING



### PUBLIC FINANCIAL MANAGEMENT

### MEASURING PERFORMANCE via APR

- ACHIEVEMENT rate: OUTPUTS VS TARGETS
- IMPLEMENTATION rate: PHYSICAL ACCOMPLISHMENT VS SCHEDULE
- BUDGET UTILIZATION rate: FIN. UTILIZATION VS ALLOTMENTS



### RESULTS-BASED M+E and REPORTING WOULD STRENGTHENED IN THE PHASES of the budget

